

# LB759 Julianne

Women's 5.1 oz. 95% polyester/5% spandex woven long sleeve tunic. Accented with adjustable roll-up sleeves with tabs for a versatile look. Features a three-button Y-neckline, chest pockets and silver buttons. Front vertical darts and back princess seams provide a flattering fit. Back yoke and rounded sweep.

**SIZES:**  
XS | S | M | L | XL | 2XL | 3XL | 4XL



**MODEL**



**BACK**



ilac bloom®  
by Jennifer Cole

**COLORS**



Pewter

**SIZE CHART**

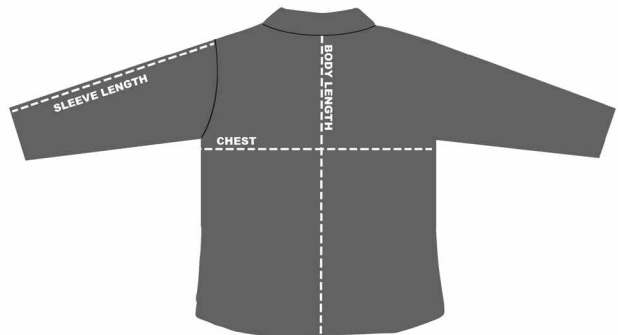
**HOW TO MEASURE:**

Smooth out wrinkles and lay garment flat on a table before measuring.

**CHEST** – Measure from 1" below armhole straight across chest.

**SLEEVE LENGTH** – Measure from top of armhole to sleeve opening.

**BODY LENGTH** – Measure from high point shoulder to sweep opening.



SIZE (Measurement in inches)	XS	S	M	L	XL	2XL	3XL	4XL
CHEST (1" below armhole)	18	19.5	21	23	25	27	29	31
SLEEVE LENGTH (from top of armhole)	23.25	23.75	24.25	24.5	24.75	25	25.25	25.5
BODY LENGTH (from center back neck)	26	27	27.5	28.5	29	31	31.5	32.5